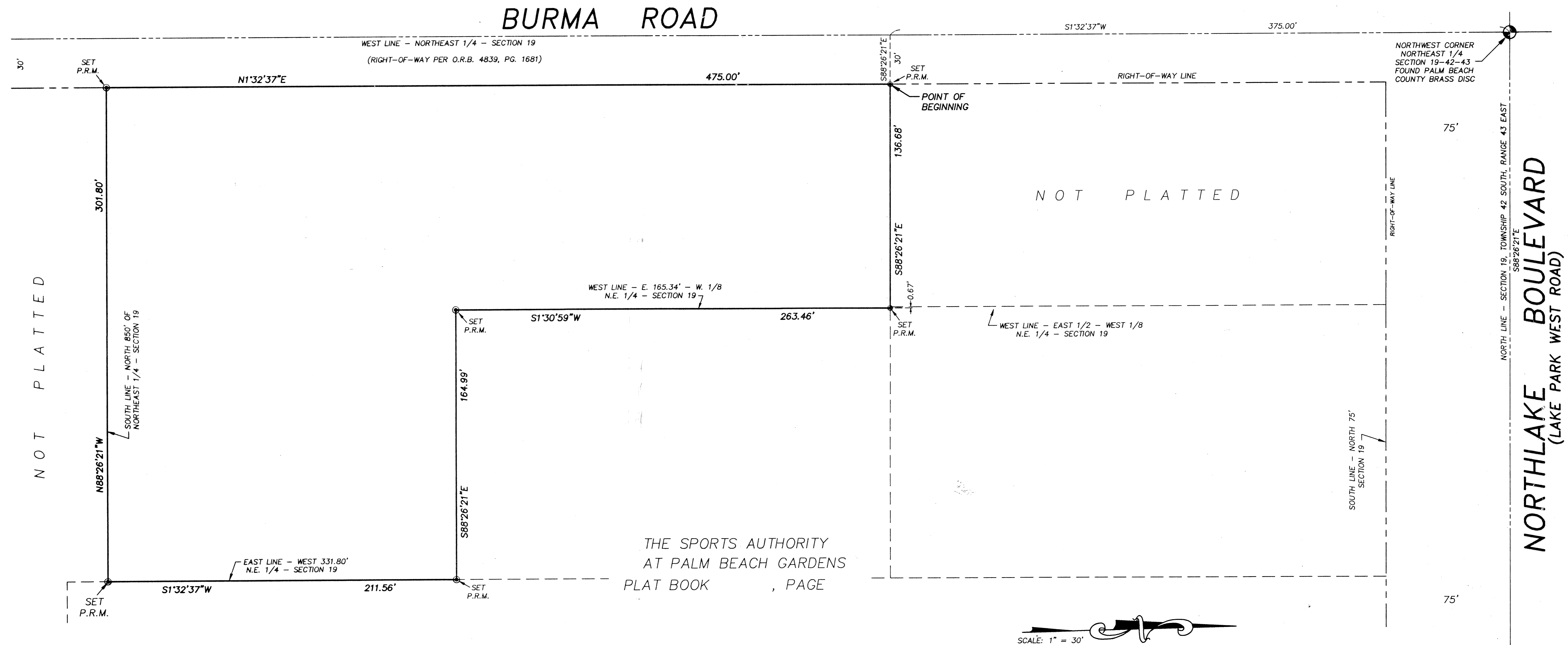


BURMA COMMERCE PARK

LYING IN THE NORTHEAST QUARTER OF
SECTION 19, TOWNSHIP 42 SOUTH, RANGE 43 EAST
CITY OF PALM BEACH GARDENS, PALM BEACH COUNTY, FLORIDA
PAGE 2 OF 2

JANUARY 27, 1997



NOT PLATTED

NOT PLATTED

NORTHLAKE BOULEVARD
(LAKE PARK WEST ROAD)

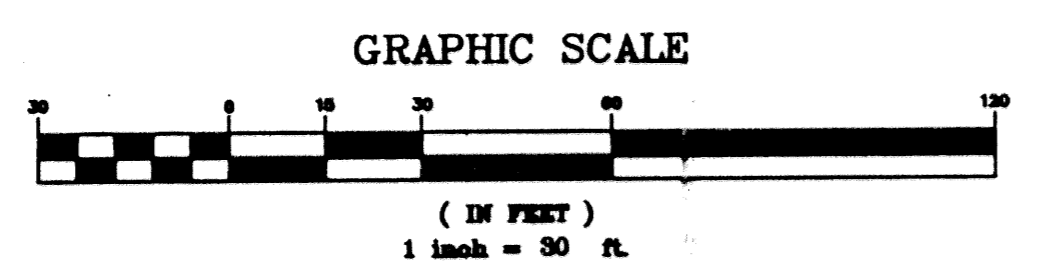
THE SPORTS AUTHORITY
AT PALM BEACH GARDENS
PLAT BOOK , PAGE



NOTES:
BEARINGS ARE BASED ON ASSUMED REFERENCE BEARING OF S88°26'21"E ALONG THE NORTH LINE OF THE NORTHEAST 1/4 OF SECTION 19, TOWNSHIP 42 SOUTH, RANGE 43 EAST.

SET P.R.M. = SET 4"x4" CONCRETE MONUMENT (RLS 1812)

LEGEND
P.R.M. = 4"x4" CONCRETE MONUMENT
P.B. = PLAT BOOK
O.R.B. = OFFICIAL RECORDS BOOK
PG. = PAGE



NOTICE: THERE MAY BE ADDITIONAL RESTRICTIONS THAT ARE NOT RECORDED ON THIS PLAT THAT MAY BE FOUND IN THE PUBLIC RECORDS OF THIS COUNTY.

THIS PLAT PREPARED BY:
WILLIAM E. POWELL, P.L.S.

CHP
CANTELOU, HERRERA & POWELL, INC.
ARCHITECTURE • ENGINEERING • SURVEYING • PLANNING
1370 SARNO ROAD, SUITE G, MELBOURNE, FLORIDA 32936
(407) 259-1525 L.B. # 6609 Fax 407-259-4185

SUBDIVISION Burma Commerce Park
BOOK 79 PAGE 43
FLOOD ZONE - FLOOD MAP # -
QUAD # - ZONING
SE - ZIP CODE -
PUD NAME City of Palm Beach